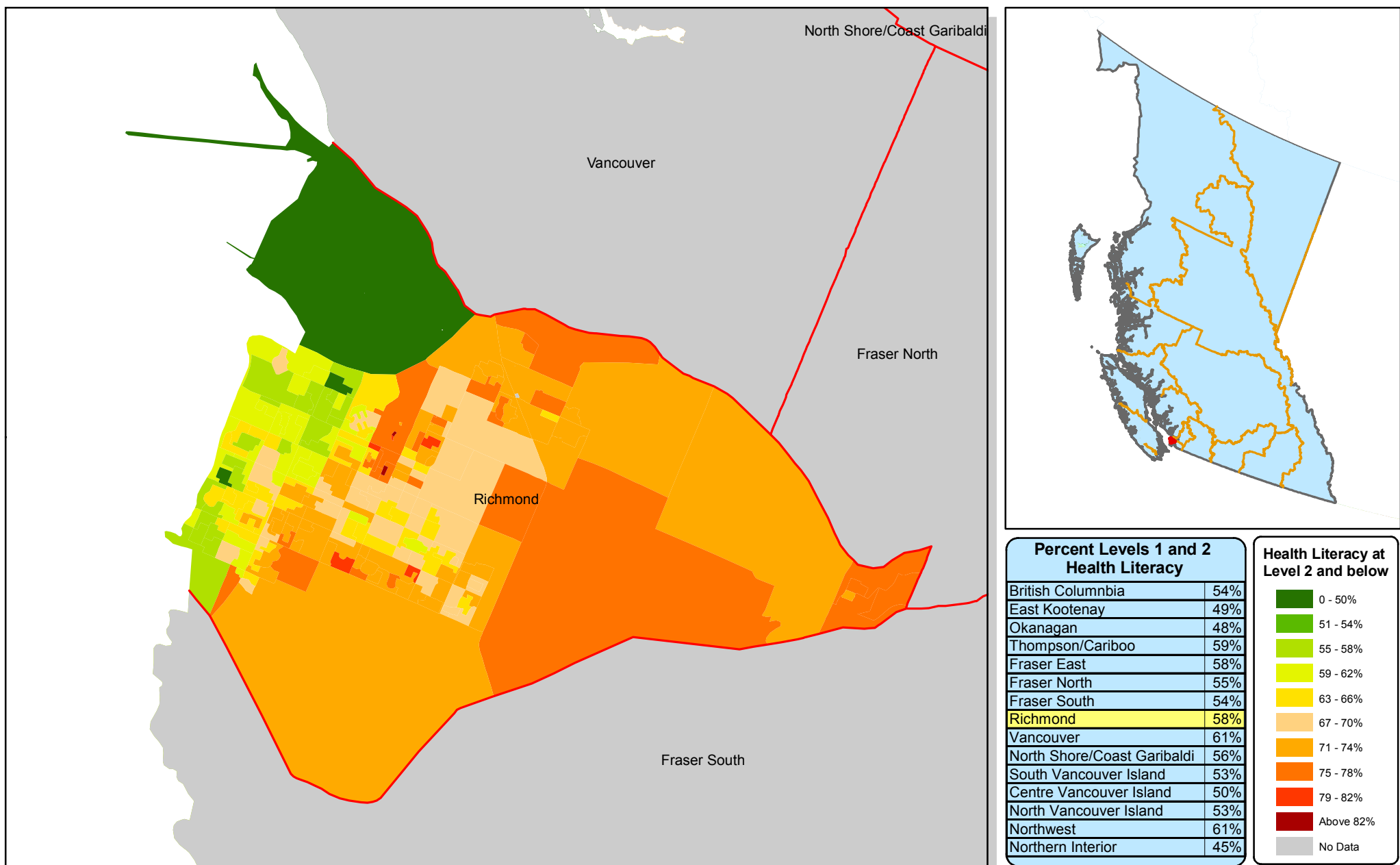


The Distribution of Health Literacy in Richmond

Proportion of adult health literacy at level 2 and below, ages 16 and older



Source: These results are derived from estimates for a geographical area based on the 2003 International Adult Literacy and Skills Survey (IALSS). The estimates are achieved by combining an area's results with those from neighbouring areas. They also factor in several characteristics of the area, from the 2001 Census, such as education and income. The geographical unit used in the map is Statistics Canada's dissemination area (DA), which is the smallest standard geographic area for which all census data are disseminated. DAs have a population of between 400 and 700 people.